

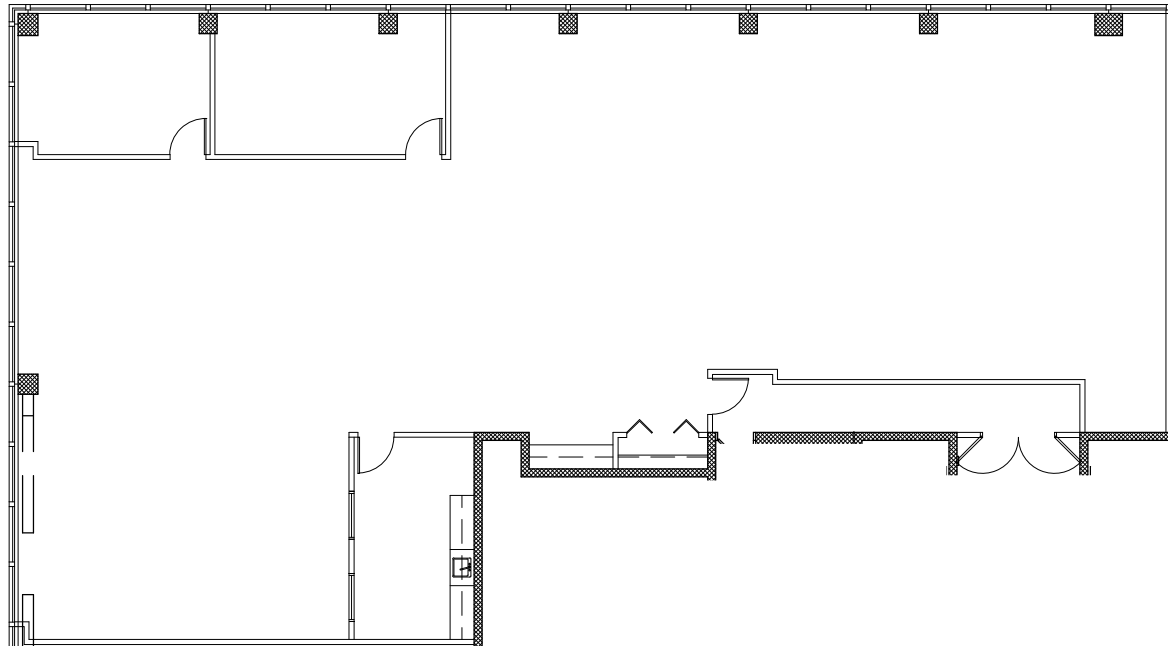
**RIVERVIEW
OFFICE TOWER**

8009 34TH AVE SOUTH
BLOOMINGTON, MN 55425

OWNED & MANAGED BY:



GEORGE HOENE
(952) 858-9254
ghoene@jmscapitalgroup.com



1
1
SUITE 450



SCALE: 1/16" = 1'-0"

NELSON

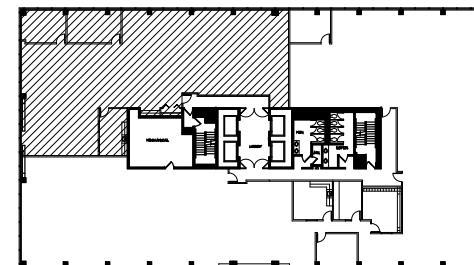
Nelson Upper Midwest Operating Company, LLC
a licensed affiliate

1201 Marquette Avenue South - Suite 200
Minneapolis, MN 55403
Phone: (612) 822-1211
Fax: (612) 822-1006

AREA: 4,532 R.S.F.

VACANCY PLAN

DATE 4-4-17
PROJECT 14.01431.00
DRAWN KMM
CHECKED DS **1 OF 1**



KEY PLAN



NOT TO SCALE