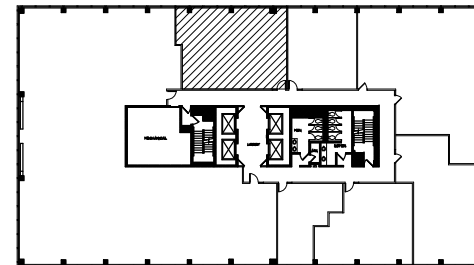


1
1

SUITE 1455



SCALE: 1/8" = 1'-0"



KEY PLAN



NOT TO SCALE

**RIVERVIEW
OFFICE TOWER**

8009 34TH AVE SOUTH
BLOOMINGTON, MN 55425

OWNED & MANAGED BY:



George Hoene
(952) 858-9254
ghoene@jmscalpialgroup.com

NELSON

Nelson Upper Midwest Operating Company, LLC
a licensed affiliate

1201 Marquette Avenue South - Suite 200
Minneapolis, MN 55403
Phone: (612) 822-1211
Fax: (612) 822-1006

AREA: 1,332 R.S.F.

VACANCY EXHIBIT

DATE 1-29-15
PROJECT 14.01431.00
DRAWN KMM
CHECKED KMM

1 OF 1