

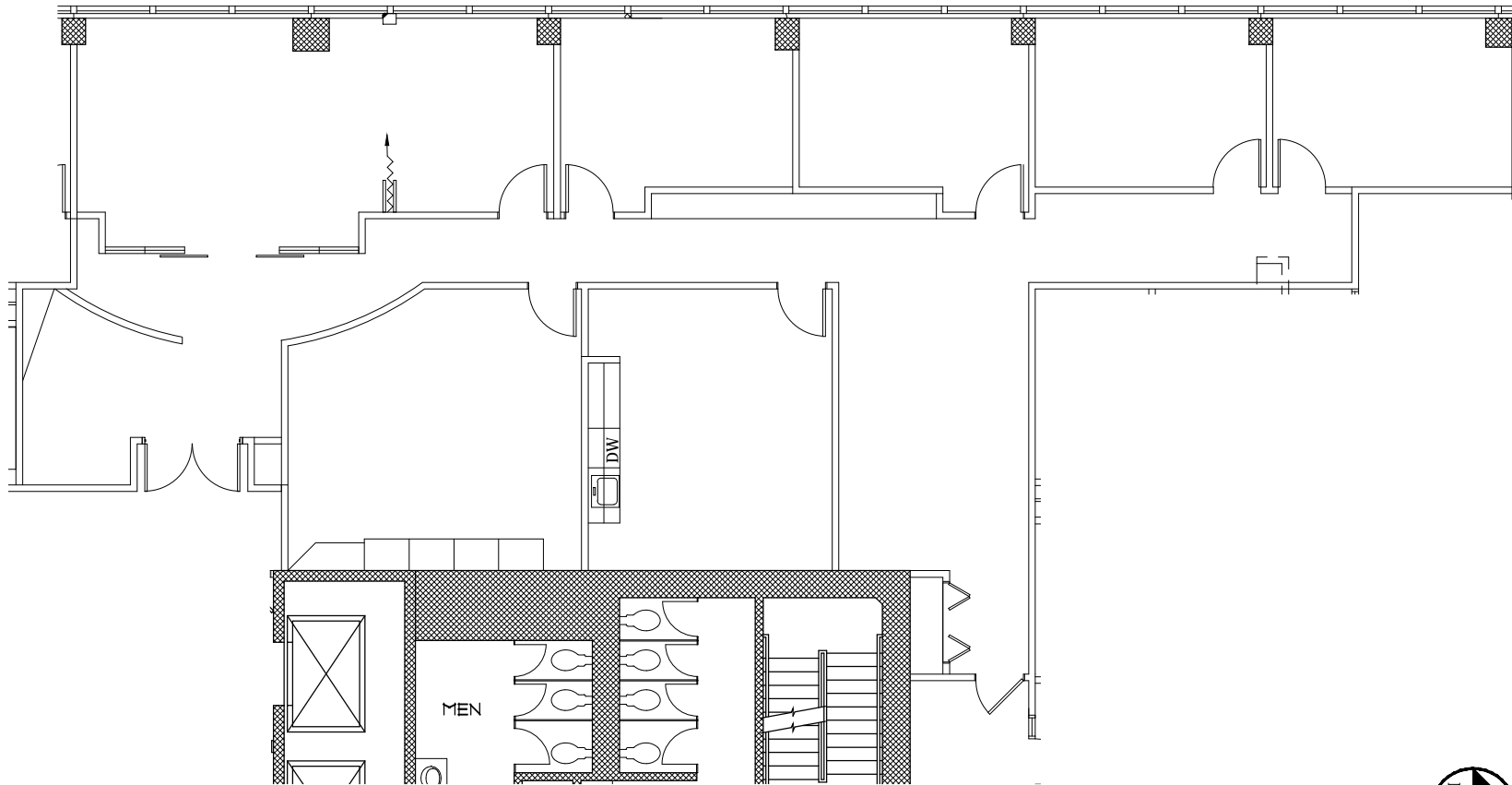
RIVERVIEW OFFICE TOWER

8009 34TH AVE SOUTH
BLOOMINGTON, MN 55425

OWNED & MANAGED BY:



MARK VAVRUSKA
(630)918-0439
mvavruska@jmscapitalgroup.com



1 SUITE 225
1



NOT TO SCALE

NELSON

Nelson Upper Midwest Operating Company, LLC
a licensed affiliate

1201 Marquette Avenue South - Suite 200
Minneapolis, MN 55403
Phone: (612) 822-1211
Fax: (612) 822-1006

AREA: 3,200 R.S.F.

VACANCY PLAN

DATE 06/02/17
PROJECT 14.01431.00
DRAWN AW
CHECKED KMM **1 OF 1**